



**Y**  
ingenierie

**IGREC INGENIERIE SAS**  
General Engineering - Research - Design - Consultancy

Our world is changing fastly and demands ever greater adaptability, improved performance and safety.

The revolution in methods of calculation and communication has entered the construction professions, which owe it to their customers to provide additional service and intelligence in the building industry.

These requirements have been expanded to the concept of overall and sustainable quality in buildings, which affects all players in the life of a building project, and in all its aspects including integration, materials and energies choice, construction, use, maintenance and demolition.

By its activities of General Engineering, Research, Design and Consultancy, IGREC INGENIERIE is a major playor of these changes.

With 60 years of history, a continuous, operational and accessible management, and rapidly responding, multi-disciplinary teams IGREC INGENIERIE is able to undertake innovative projects on any scale and however complex.

Our organization, which remains flexible and friendly, works through personal contacts, respect for others, autonomy and personal responsibility.

Our aim is to provide custom-made solutions. Let IGREC INGENIERIE be the partner of your project from the design to the realization.

## A long-established company

The «Groupe d'Études pour la Construction» was created in 1958 grouping together several design organizations specialized in construction techniques.

Distinguished by the **continuity of its management**, it expands its activities to cover General Engineering, Research, Design, and Consulting under its present name of IGREC INGENIERIE.

## Objectivity and loyalty provided by an independent company

IGREC INGENIERIE is a simplified joint-stock company with shares entirely held by its managing team and its main executive managers.

This enables IGREC INGENIERIE to **remain independent** and fully in control of its professional ethical standards, and to guarantee confidentiality, objective judgements and loyalty in dealing with your projects.



Projects all over the world

## Continuity, loyalty and skills for an effective partnership

### An approach based on partnership

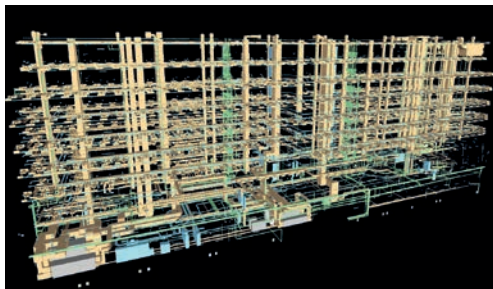
As an organization on a human scale, IGREC INGENIERIE relies on personal contacts in order to provide a **customized service**. Its aim is to act as a **responsible, creative and innovative** partner at all stages of your projects, from design to implementation and operating.



### Effective human and material resources

Thanks to its **multi-disciplinary team**, IGREC INGENIERIE is able to provide all-inclusive and coordinated services in all its special technical and economic fields, including project management, civil engineering, air-conditioning, electrical and communication equipment, industrial processes, infrastructures, quantity surveying and works management.

**Building Information Modeling**, structure and fluids calculation, energy efficiency, our engineers and technicians have efficient software which meet changing client demands. By this action, we bring our professionalism and responsiveness into projects we are entrusted.



### Tried and tested professionalism

Many prestigious references testify to IGREC INGENIERIE's skills. These are ensured by **professional qualifications certified** by the OPQIBI. The management system implemented by IGREC INGENIERIE has been assessed and found to meet the **requirements** of ISO 9001 : 2008.

IGREC INGENIERIE is an active member of the professional association SYNTEC Ingénierie.



### A wild field of activities

IGREC INGENIERIE carries out general engineering and consulting projects in a wide range of fields, including **building, industry, infrastructures, transport, energy** and the **environment**.

The following pages illustrate our references in the fields of consultancy, government buildings, education, culture, sports and leisure, residential, health, laboratories, commercial activities, hotels, offices, industry, urban planning, civil engineering, transports, hydraulic and networks.



## General Engineering & Design

**Assist our customers and partners to develop and manage their projects**

IGREC INGENIERIE carries out general engineering and consultancy for **construction** and **rehabilitation** projects. And this from the management assistance and the specialized technical studies, to the works management, implementation and maintenance assistance. We also manage sustainable development certifications our clients opted for.

**Diagnosis, planning, feasibility, expertise, consultancy**

**Building owner assistance**

**Engineering team**

**Project management**

**Design and implementation studies**

Civil engineering and structural engineering

Infrastructure engineering

Urban hydraulics engineering

Containment engineering

Energy performance engineering

Fluids and networks engineering

HVAC

Electrical engineering

Safety engineering

Low-voltage engineering

**Quantity surveying**

**Works management**

**Sustainable Development consulting**

**Implementation, maintenance and dismantling assistance**

**Scheduling and coordination**

**Safety and security**



Above-ground parking structure  
in Toulouse-Blagnac (31)  
SCAU - Azema Architects



Drainage networks at Seine Arche District in Nanterre (92)  
TGTFP Architect



Controlled atmosphere area for EFA Medical SORIN Group  
in Clamart (92), ABH Architect



Anatole France Viaduct in Nanterre (92)  
TGTFP Architect



Offshore assembly wind power plant in Montoir de Bretagne (44)  
Philippe Cointet Architect - Quille Company- EGIS Grand Ouest



The «Sugar warehouse» in Dunkerque (59)  
Pierre-Louis FALOCI Architect



We promote responsible conception to enable sustainable construction

Ours engineers and technicians have worked to increase buildings environmental and energy efficiency. IGREC INGENIERIE provides its customers a design quality and monitoring of progress, as well as assistance for maintenance of sustainable buildings and infrastructures.

Advice and assistance, promotion of renewable energies, water and waste management, site with minimal environmental nuisances, selection of construction methods, our team offers innovative solutions to meet requirements of various international standards (BREEAM, HQE, LEED, Passivhaus,...). Thus, our projects can claim a true quality of **sustainable and responsive construction**.

For each project, we promote an environmental, innovative and sustainable construction.



Desmoulins development area in Cachan (92) - AAA Paris Architect



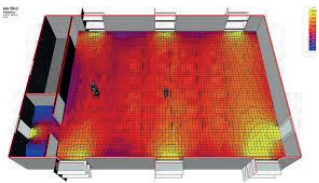
Walkway of sports fields in Champs-sur-Marne (77) Ateliers Lion Architect

Tools for optimal design and rigorous implementation

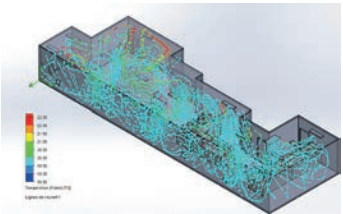
Thanks to its multi-disciplinary engineering, IGREC INGENIERIE is able to use all modeling tools essential to the optimized design of building and infrastructure projects. IGREC INGENIERIE has also developed **expertise on 3D numerical modeling** for the realization of full project management with BIM (Building Information Modeling).

Today, a major part of our projects is developed with building information modeling, for new buildings or restructuring and renovation projects. For some of these operations, IGREC INGENIERIE acts as a BIM Manager.

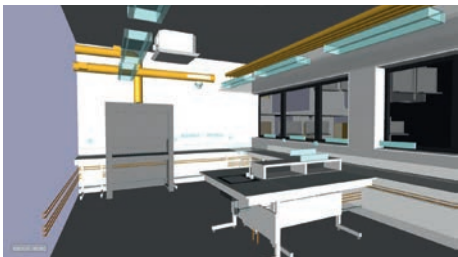
To ensure a rigorous monitoring of works, IGREC INGENIERIE has specific tools, particularly for the cloud management of visas implementation plans and for acceptance operations.



ECOTECT  
This 3D modeling software is made to represent the solar incident radiation and to analyse of prevailing winds



SOLIDWORKS - 3D mechanical CAD program for internal & external Fluid-Flow simulations and thermal analysis



BIM (Building Information Modeling)  
I2BC project



BIM (Building Information Modeling)  
Factory of drinking water production in Méry sur Oise (95)

Government Building



City Hall in Fosses (95)  
Pierre-Louis Faloci Architect



«Les Croisettes» prison in Le Mans (72)  
Synthèse Architecture - Alain Derbesse Architects



Regional Administrative Centre in Sarcelles (95) for the French Home Office  
Michel Rémon Architect



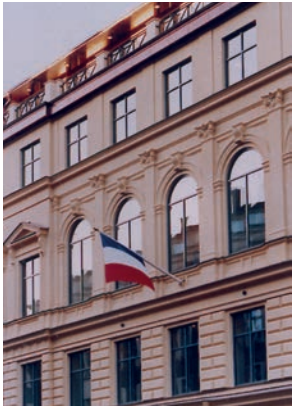
Ecole Nationale des Greffes (Court Officers National school)  
in Dijon (21) - Michel Rémon Architect



Delorme Police Station in Marseille (13)  
Thierry Van de Wyngaert Architect



French Embassy in Hanoi - Vietnam  
Cochin Architect



French Embassy in Stockholm - Swenden  
Equator Paris Architect



Administrative Centre in Melun (77)  
Atelier de L'Ile Architect - IGREC INGENIERIE  
Project Manager and Representative



Judicial and penitentiary buildings in Côte d'Ivoire  
ATAUB and CARET Architects



Education



Refurbishment of Wendel Mansion into an elementary school in Paris (75) - SCAU Architect



House of Human Sciences in Paris (75)  
François Chatillon, ACMH - Michel Rémon Architects



Paris Sorbonne University (75)  
Elizabeth and Christian de Portzamparc Architects



Paris XII University - Law faculty and library in Creteil (94)  
Michel Rémon Architect



EHESS Campus Condorcet (School for advanced Studies in the social Sciences)  
in Aubervilliers (93)  
Pierre Louis FALOCI Architect



Alexandre Denis boarding school in Cerny (91)  
Celnikier & Grabli Architect



Farming vocational High School in Brie  
Comte Robert (77) - Ateliers 234 Architect



ENSAM Engineering University in Metz (51)  
Michel Rémon Architect



Health Regional School in Toulouse (31)  
Ateliers Lion Architect



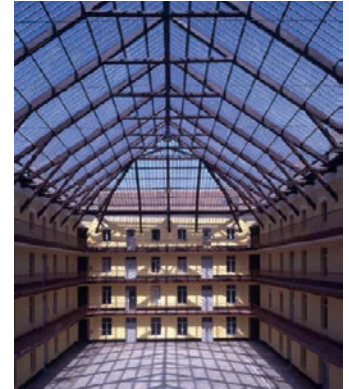
«Les Chênes» University in Cergy-Pontoise (95)  
Michel Rémon Architect



## Culture



Fine Arts Museum in the Dukes of Burgundy's palace in Dijon (21)  
Ateliers Lion Architect – Éric Pallot ACMH



Central Pavilion Familistère in Guise (02)  
Frenak & Jullien Architect



Sénart Theater (77)  
Chaix & Morel Architect



Museum of Economics and Currency in Paris (75)  
Ateliers Lion Architect – Éric Pallot ACMH



The «Sugar warehouse» in Dunkerque (59)  
Pierre-Louis Faloci Architect



Refurbishment of Musée Carnavalet in Paris  
François Chatillon Architect



Mosque and Muslim Cultural Centre in Boulogne-Billancourt (92) - Pierre-Louis Faloci Architect



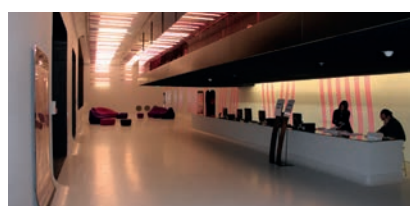
Refurbishment of the Museum of Picardie in Amiens (80)  
Frenak & Jullien Architect



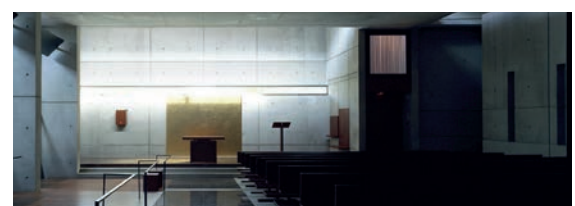
Interpretation Center of the World War 1 in Souchez (62)  
Pierre-Louis Faloci Architect



«La Cartonnerie» contemporary Music Hall in Reims (51)  
Ripault & Duhart Architect



Forum des Images and François Truffaut national cinema library in Paris (75) - X'TU Architect



«Notre Dame de la Sagesse» Chapel in Paris (75)  
Pierre-Louis Faloci Architect



Sports & Leisure



Marie Paradis Gymnasium in Paris (75)  
Explorations Architecture



Auguste Delaune Stadium in Reims (51)  
Michel Rémon Architect



Beach and Swimming Area in the public regional leisure centre in Torcy (77)  
Michel Rémon – Jacques Coulon Architects



Olympiades' Gymnasium in Paris  
TNA Architect



Léo Lagrange stadium in Cachan (94)  
CENSI & JACQUOT Architect



Re-structuring and refurbishment of Gaston Gérard Stadium in Dijon (21)  
Michel Rémon Architect



Refurbishment of the Municipal swimming-pool and ice rink in Boulogne-Billancourt (92) - Nabères TNA Architect



Housing



Refurbishment of the «Palais de la Femme» in Paris (75) for the Salvation Army by Immobilière 3F  
A.X.C. Architect - IGREC INGENIERIE Project Manager and Representative



Paris Habitat Housing - Day nursery - Retail  
Paris Rive Gauche (75) - SOA Architect



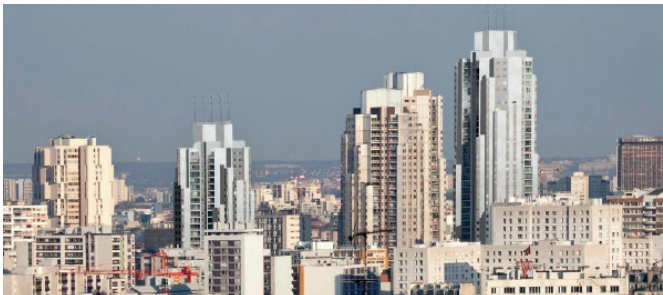
Student residence zone in Gif-sur-Yvette (91)  
Architecte SOA



Housing and Retail Building for Icade and Nexity in  
Boulogne-Billancourt (92) - Ateliers 234 Architect



Social housing for Immobilière 3F in Mennecey (91)  
Jean Guevilly Architect



Refurbishment of «Prélude and Sonate» Towers for Immobilière 3F in Paris (75)  
Ateliers Lion Architect



Social housing in Paul Bourget area for ELOGIE Paris (75)  
VEI & Nomade Architects



Social Housing for RSF in Cesson (77)  
Raphaël Gabrion Architect



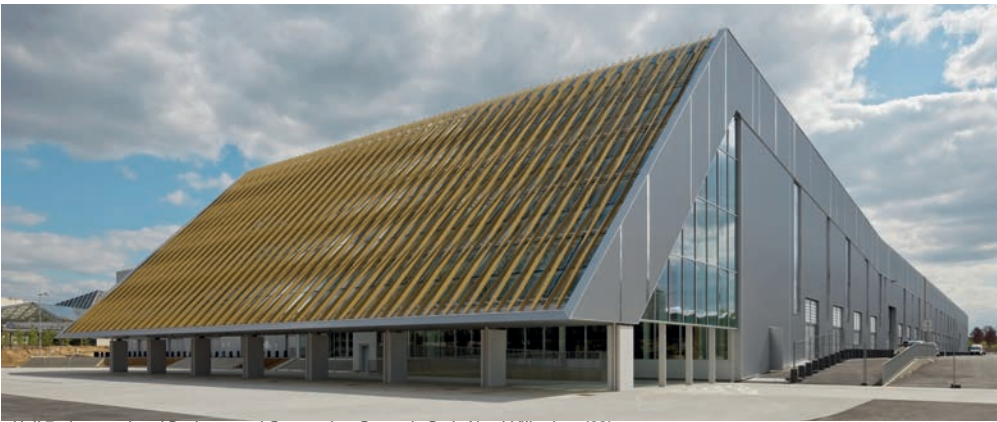
100 social housing and a school in Paris  
Nicolas Reymond - Michel Guthmann  
MG AU Architects



Housing and retail building by Icade and Vinci Immobilier Arche  
en Seine in Nanterre (92) - Ateliers 234 Architect



Retails and Hotels



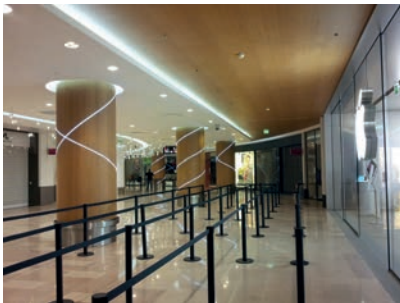
«Hall 7», International Business and Convention Centre in Paris-Nord-Villepinte (93)  
Chaix & Morel Architect



«Les Passages» Shopping Complex by SEGECE in Boulogne-Billancourt (92)  
Dusapin & Leclercq Architect



Capucines-Daunou Hotel 5\* in Paris  
B&B Architect



«Les Quatre Temps» Shopping Complex in Paris La Défense (92)  
Farcot & Associés - Saguez & Partners Architects



Convention Centre in Paris Porte Maillot Paris (75)  
Nicolas Adam - Saguez & Partners Architects



Shangri-La Hotel in Paris (75)  
Richard Martinet Architect - Pierre-Yves Rochon Interior Designer



Residential Building and Retails Porte Pouchet by CFA in Paris (75)  
Hardel & Le Bihan Architect



«Rives d'Arcin» Shopping Complex by SEGECE in Bègles (33)  
CVZ Architect



Shopping complex of «la Part-Dieu» for UNIBAIL in Lyon (69)  
MVRDV Architect



Health



Lagny 585 beds regional hospital in Marne la Vallée (77)  
Brunet & Saunier Architects



Hospital maternity and medical imaging - Le Chesnay hospital operating blocks in Versailles Le Chesnay (78) - Jean Dubus & Bernard Grimaux Architects



«La Pitié - Salpêtrière» Hospital Endocrinology Department in Paris (75)  
Michel Rémon Architect



100 beds health centre for elderly people in Paris (75)  
Lazo & Mure Architect



Geriatrics centre of the Regional Hospital in Poitiers (86)  
Lazo & Mure Architect



Health Centre for elderly people for the CASV in Villers-Cotterêt (02)  
Lazo & Mure Architect



Armand Trousseau Hospital Maternity in Paris (75)  
Laurent Israel & Bernard Grimaux Architects  
IGREC INGENIERIE Project Manager and Representative



Hemodialysis Centre, analysis laboratory, pharmacy and logistics of André Grégoire Regional hospital in Montreuil sous Bois (93)  
Charles Delamy Architect



Notre Dame de Bon Secours' Social health-care institution in Paris (75)  
Zündel & Cristea Architect



Laboratories



Sorin France Laboratory in Clamart (92)  
ABH Architect



Laboratories of André Grégoire Hospital  
Montreuil sous Bois (93) - Charles Delamy Architect



Necker Hospital Medicine University in Paris (75)  
Patriarche & CO - Henn Architekten Architects



Construction of the Institute of integrative Biology of the Cell in Gif-sur-Yvette (91) - N. Raguenau & A. Roux - Michel Rémon Architects



Biotechnology business incubator «Paris Sante Cochin» in Paris (75)  
Richez & Associés Architects



Refurbishment of Physics, Chemistry and Environmental studies laboratories in Paris (75)  
PHD Architect - IGREC INGENIERIE Project Manager and Representative



Development of the Vision Institute in Paris (75)  
VIB Architect



Animal Housing Facility at Mondor Institute for Biomedical Research  
In Paris Créteil University (94) - Celnickier & Grabli Architect



Interdisciplinary Research Centre of extreme light - CEA  
Project «RIO» in Gif sur Yvette (91)



Offices and Activities



Equinove Buildings for Renault by Stargime in Le Plessis-Robinson (92)  
ABH Architect



R'Way office building by Bouygues Immobilier  
in Boulogne-Billancourt (92) - Chaix & Morel Architects



Office building - Dieppe Sud Urban Development Zone (76)  
Baumschlager Eberle Architect



Haussmann Anjou complex by Bouygues Immobilier in Paris (75)  
Atelier J-J. Ory Architect



Office and research building for ONERA National Office for Aerospace  
Studies and Research in Palaiseau (91) - ABH Architect



Groupama Loire - Bourgogne Headquarters in  
Olivet (45) - DMT Architect



Incubator for innovative entreprises in Cite  
Descartes à Champs sur Marne (77)  
Studio Bellecour Architect



Pfizer headquarters by Bouygues Immobilier  
in Montrouge (92)  
Mas & Roux – Saubot & Rouit Architects



UGAN headquarters in Niamey - Niger  
Blé Yangra Architect



Offices - Gaston Tessier by SODEARIF in Paris (75)  
Ateliers 234 Architect



Industry



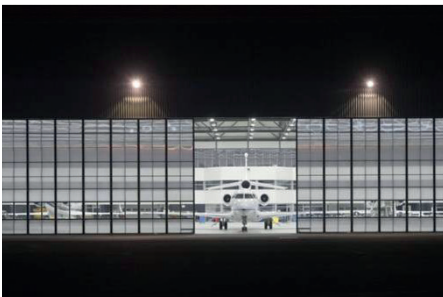
ELA Medical/Sorin France Headquarters including a large clean room in Clamart (92)  
ABH Architect



MBDA Headquarters and process building by Stargime  
in Le Plessis-Robinson (92) - ABH Architect



CRMA aeronautics equipment maintenance plant by Sefri Cime  
in Elancourt (78) - Patrice Novarina Architect



Dassault Falcon 7X maintenance Hanger in Le Bourget Airport (93)  
Jean-Jacques Devilliers Architect



19 telecommunications centres in France  
for Lambdanet, Internet network provider



IndustriLab, aeronautic technology transfer centre specialized in robotics and composite materials in Méaulte (60)  
Michel Rémon Architect



Offshore assembly wind power plant in Montoir de Bretagne (44)  
Philippe Cointet Architect - Quille Company- EGIS Grand Ouest



Falcon's maintenance Hangar in Bordeaux Mérignac (33)  
Jean-Jacques Devilliers Architect



# Urban Planning



Terraces in Seine Arches Area for EPADESA in Nanterre (92)  
TGTFP Architect and Planner



Urban and Landscape Design for Cluster Descartes In Marne la Vallée (77)  
Ateliers Lion Architect



Structural redesign of François Mitterrand Mail in Rennes (35)  
Mutabilis Landscape Architect



Laying out of the arera around the City Hall of Asnières sur Seine (92)  
Atelier de l'Ile Landscape Architect



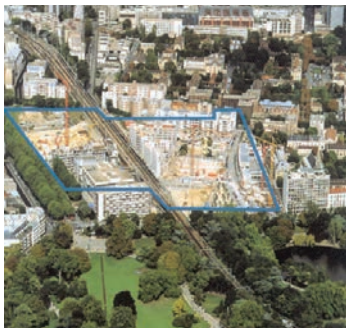
Public spaces in Fleury-les-Aubrais (45)  
La Compagnie du Paysage



«Coeur de Ville» Urban Project in Briançon (05)  
Pierre-Louis Faloci Architect



Transborder development in Ferney-Voltaire (France) – Grand Saconnex (Switzerland) (75 ha)  
Seura Architect– Ilex Landscape Architect



Alésia Montsouris Urban Development in Paris (75) - Charlet Urban Planner - Michel Desvigne - Christine Dalnoky Landscape Architect



«Gare Ardoines» Urban Project in Vitry sur Seine (94)  
TGTFP Architect



Park François Mitterrand in Bagneux (92)  
Atelier de l'Ile Landscape Architect



Multi-site joint Urban Project in Trilport (77)  
Françoise-Hélène Jourda Architect



Civil Engineering



Anatole France Viaduc Seine Arche District in Nanterre (92)  
TGT Architect and Urban Planner



Shopping complex car park in Boulogne-Billancourt (92)  
Dusapin & Leclercq Architects



Public car park in Orléans (45)  
Atelier Tudelle Architect



Multimodal exchange platforms in Herblay (95)  
Richez & Associés Architect



Place de la paix and underground car park in Suresnes (92) - Richez & Associés Architect



Overground car-park in Toulouse Blagnac Airport (31)  
SCAU - Azéma - Tsuba Architects



Refurbishment of Boieldieu's terraces in la Défense (92)  
Pierre Gangnet, Empreinte Paysage Architects



Bridge over RER A in Champs-sur-Marne (77)  
Ateliers Lion Architect



Footbridge in François Mitterrand Park in Bagneux (92)  
Atelier de l'Ile landscape Architect



Relocation of electrical plant of RER Regional Express Network in Nanterre (92) - TGTFP Architect



Restructuration of underground car-Park in Nanterre (92) - TGTFP Architect



Foot bridge over Boulevard du Port in Cergy Pontoise (95) - Michel Remon Architect



Road and Transport



Laying out of a public area of Seine Arche District in Nanterre (92)  
TGTFP Architect and Planner



New Pesaro boulevard  
Seine Arche District in Nanterre (92) - TGT Architect and planner



Multimodal exchange platforms in Herblay (95)  
Richez & Associés Architects



First tramway line in Orleans (45)  
Jean-Michel Wilmotte Architect



Public transport and urban intégration in Reims (51)  
Michel Rémon Architect - Jacques Coulon Landscape Architect



Laying out of a secondary highway road in Asnières and Gennevilliers (92)  
TGT Architect - Acte 2 Paysage Landscape Architect



Aircraft areas in Le Bourget Airport (93)



Urban Hydraulics - Networks



Refurbishment of the filtration unit of drinking water works in Méry-sur-Oise (95)  
Explorations Architecture Architect



Drainage networks at Seine Arche District in Nanterre (92)  
TGTFP Architect



Installation of hydrocarbon separators in restricted area in Le Bourget Airport (93)  
IGREC INGENIERIE project manager and representative



Laying out of François Mitterrand mail in Rennes (35) Mu-  
tabilis Landscape Architect



Construction of a pipe gallery and utility network  
displacement at la Pitié-Salpêtrière Hospital in Paris (75)



Creation of an outside basin of 2 370 m3  
at Le Bourget Airport (93)



Water Rain Master plan at Le Bourget Airport (93)



SEDIF - Drinking waterworks renewal in the south of the Paris region  
(91, 92, 94)



Alternative wastewater treatment process at Bougainville High School in Brie-Comte-Robert (77)  
Ateliers 234 Architect



Landscape basin – Desmoullins Urban Project  
in Cachan (92) - AAA Architect

crédits photo : Daniel Osso, J.-M. Monthiers, Nicolas Borel, Alexandre Duprez, Anaud Finistre, Marie Ferrati, Alexandre Tabaste, Julien Lanoo, Hervé Abbadie, Shangri-La Hotels and Resorts, 11H45, Sergio Grazia, Dassault Aviation / DFS / Ph. Stropia, Gagneraud, Vincent Vidal, Cyrille Weiner, La République du Centre, SACER, Anne-Claude Barbier, ALSTOM, Thierry Naberes, Cenci & Jacquot, SOA Architecte, Antoine Mercusot, Defacto, La compagnie du paysage, Adria Goula, L'Autre Image, Olivier Wogenscky, Baumschlager Eberle Architekten

MAJ jan. 2017



**IGREC INGENIERIE SAS**



127 avenue d'Italie CS 21405 - 75214 PARIS CEDEX 13 FRANCE - [www.y-ingenierie.com](http://www.y-ingenierie.com) - T (33) 1 53 94 73 73 - F (33) 1 53 54 73 99  
SAS au capital de 266 250 euros - RCS Paris B 784 564 197 - APE 7112 B - N° TVA intracommunautaire FR 19 784 564 197